

INTERPRET:

"When I am addressed as 'Mr. President', I turn to see whether you are not at my elbow."

- William Howard Taft
to Teddy Roosevelt

The background of the entire image is a stylized American flag with a distressed, weathered texture. It features a blue canton with white stars and alternating red and white horizontal stripes. The text is overlaid on this background.

UNITED STATES

HISTORY

with Mr. Willis

UNIT 2 - DAY 15

PROGRESSIVISM Under Taft

**IN 1908, TEDDY ROOSEVELT DECIDED
NOT TO RUN FOR RE-ELECTION...**

**HIS POPULARITY MEANT THAT AMERICANS
WANTED MORE OF WHAT TR HAD DONE**



**THE NEXT POTUS WOULD NEED TO FOLLOW
IN TR'S FOOTSTEPS OF REFORM**



**TR HANDPICKS A TRUSTED FRIEND TO RUN TO
REPLACE HIM AND CONTINUE HIS LEGACY**



AND THAT MAN WAS...

WILLIAM HOWARD TAFT



Friends w/TR, Taft was hand-picked to run in 1908 by TR & GOP
TEDDY WAS SO POPULAR THAT THE PEOPLE
WOULD ELECT WHOMEVER HE CHOSE

Taft was a hard-line conservative
who served as TR's Sec. of War
IT WAS UNDERSTOOD AND ASSUMED THAT
TAFT WOULD EXECUTE & CONTINUE THE
REFORMS OF THE ROOSEVELT ERA

With endorsements & campaigning
from TR, Taft wins easily in 1908

WILLIAM HOWARD TAFT

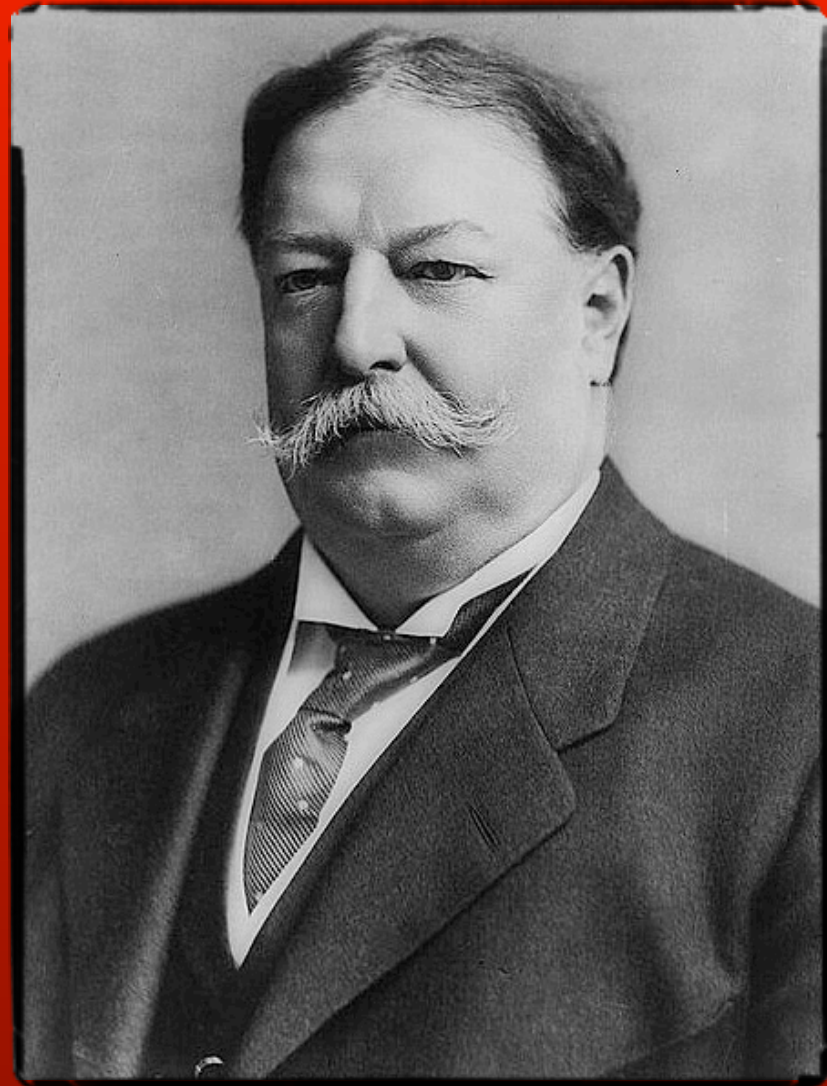
TAFT'S LEGACY

HIS FAILURE TO CONTINUE REFORMS SPLIT THE GOP

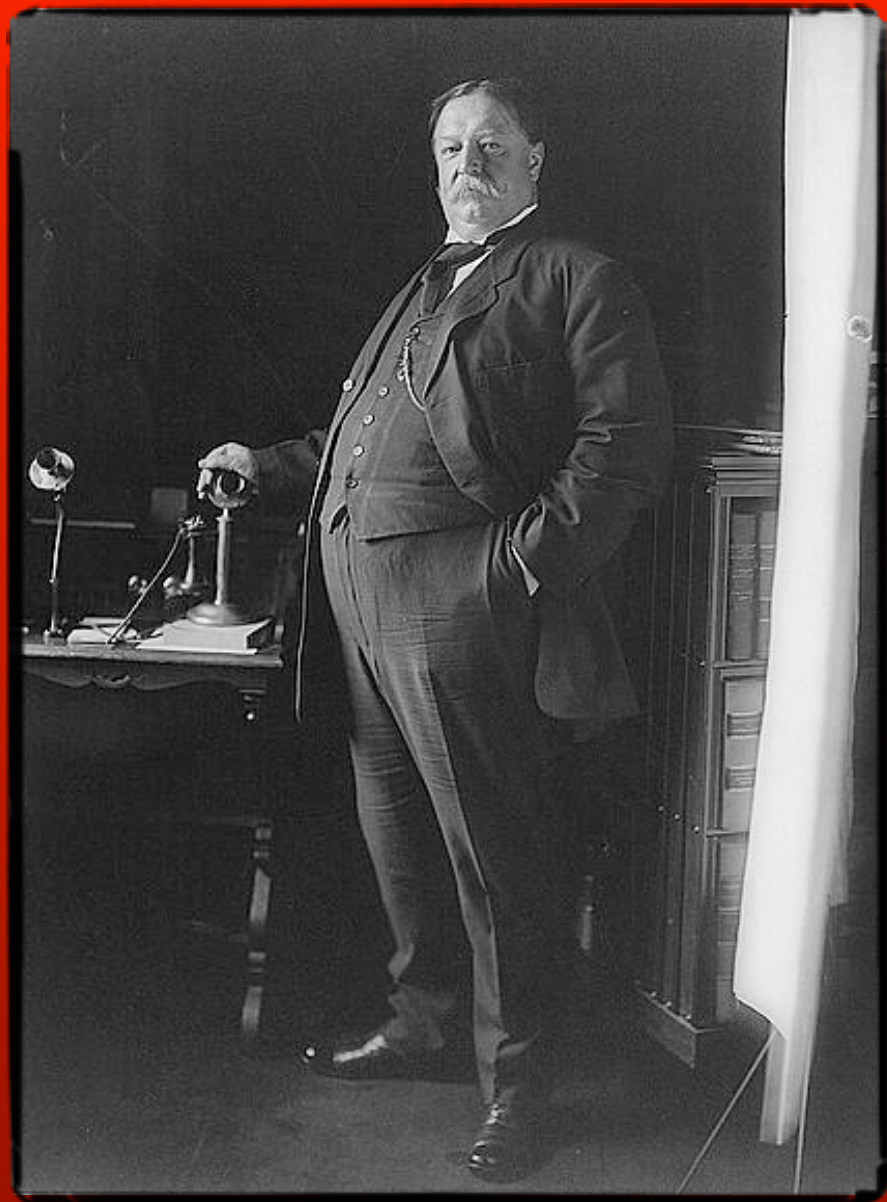
Despite busting 90 trusts in 4 yrs, Taft was never as popular as TR
ALTHOUGH MORE SUCCESSFUL THAN TR IN TRUSTBUSTING, HE GOT LITTLE CREDIT

He never felt like President!
DISCOMFORT IN OFFICE LED TO OVEREATING & HE GREW TO 400 LBS

He's the first president to throw out the first pitch at a MLB game





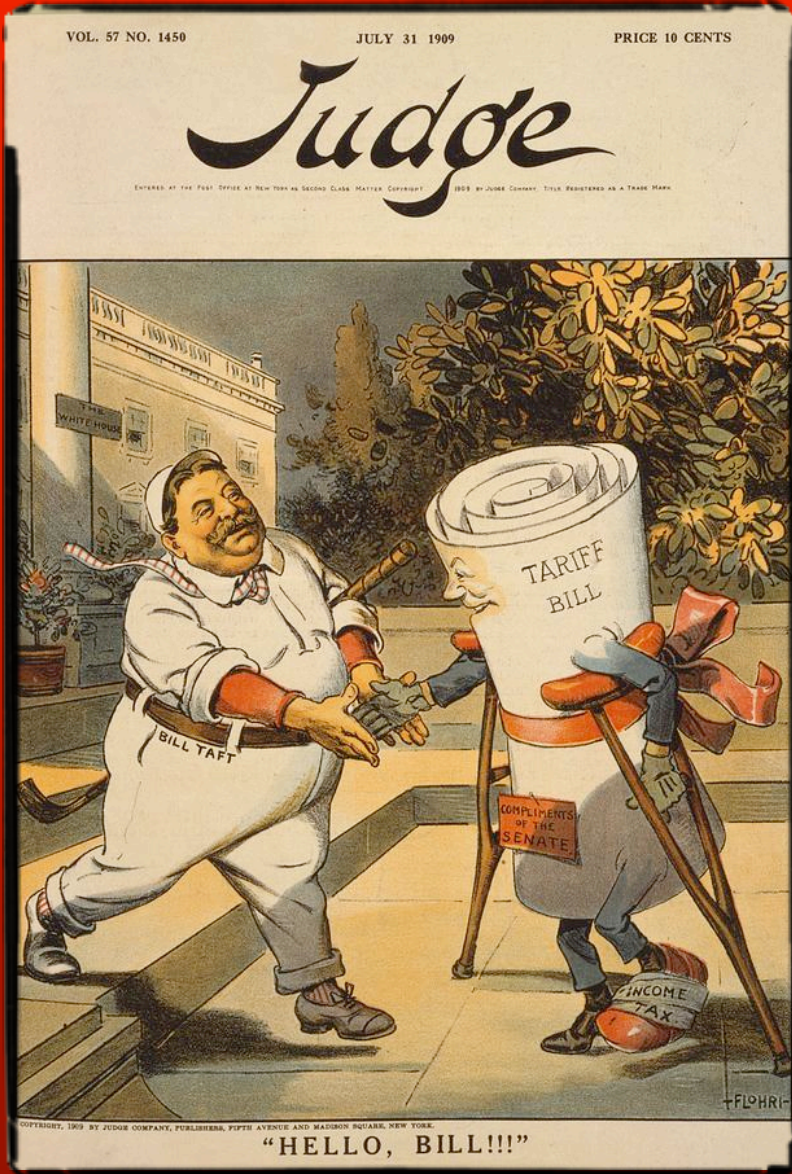




BUT, BECAUSE OF TAFT'S POLICIES...

**THE REPUBLICAN
PARTY SPLITS**

SPLIT OVER TARIFFS



Taft campaigned to **lower tariffs on imports**, bringing **trade prices down**. **This would be a continuation of TR's progressive agenda on trade**

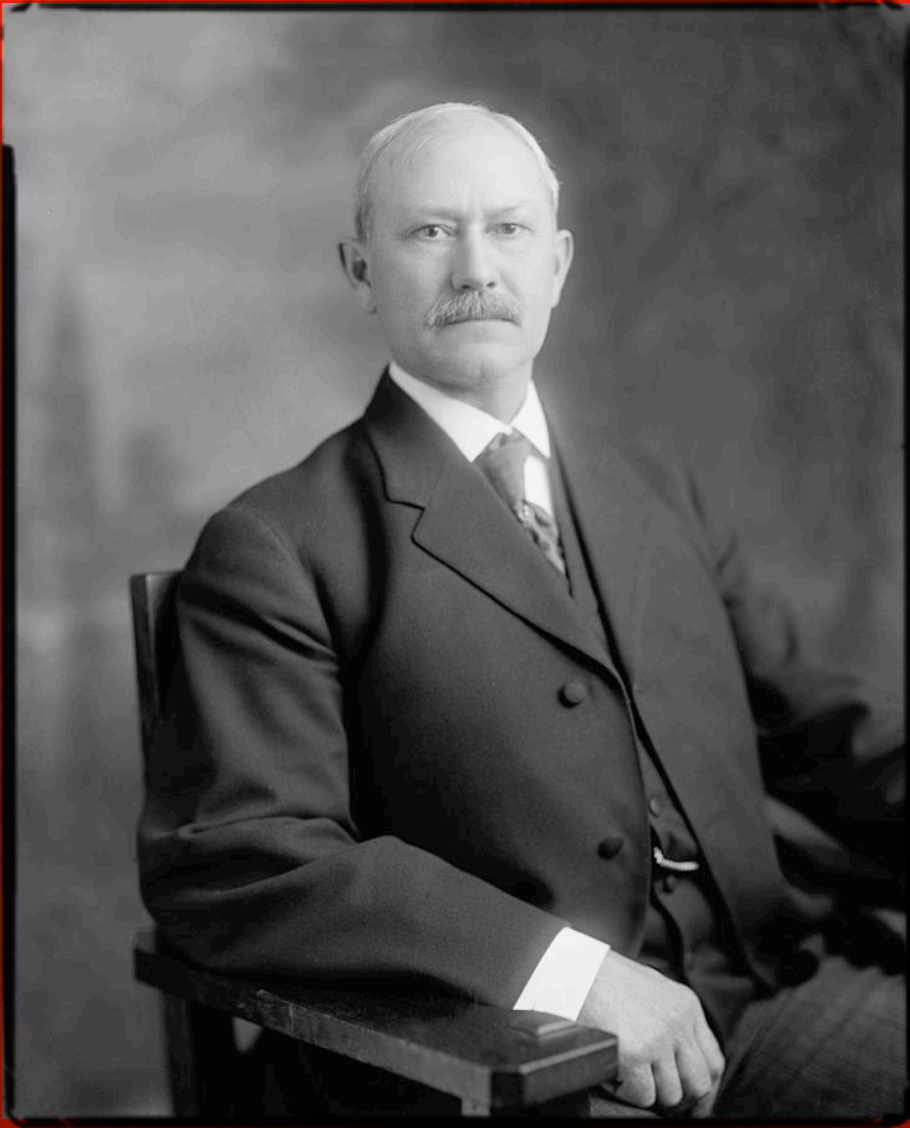
GOP House members pass the **Payne-Aldrich Tariff**

Bill reversed rate reductions on imports, effectively raising tariffs

Instead of vetoing it, Taft **breaks his campaign promise** and **signs it**. **He calls it "the best bill ever"**

Progressives in the GOP feel betrayed!

SPLIT OVER CONSERVATION



Taft appoints **Richard Ballinger** as Secretary of the Interior

BALLINGER WAS A WEALTHY LAWYER WHO DISAPPROVED OF CONSERVATIONISM

Ballinger sold 1 million acres of coal-rich Alaskan reserve lands

THIS PROTECTED FEDERAL PROPERTY WAS SOLD TO HIS BIG BUSINESS FRIENDS

Progressive Republicans are outraged!

TAFT HAS REVERSED A REFORM OF TR, TAKING LAND OFF TR'S PROTECTED LIST!

AND THEN...

The final divide!

SPLIT OVER PARTY DIRECTION



By 1910, Taft's policies had **split** the **GOP** into two factions:

CONSERVATIVES

vs.

PROGRESSIVES

The **Conservatives** followed **Taft** and sought to repeal TR's reforms

The **Progressives** believed in **TR's** philosophy, wanted further reform

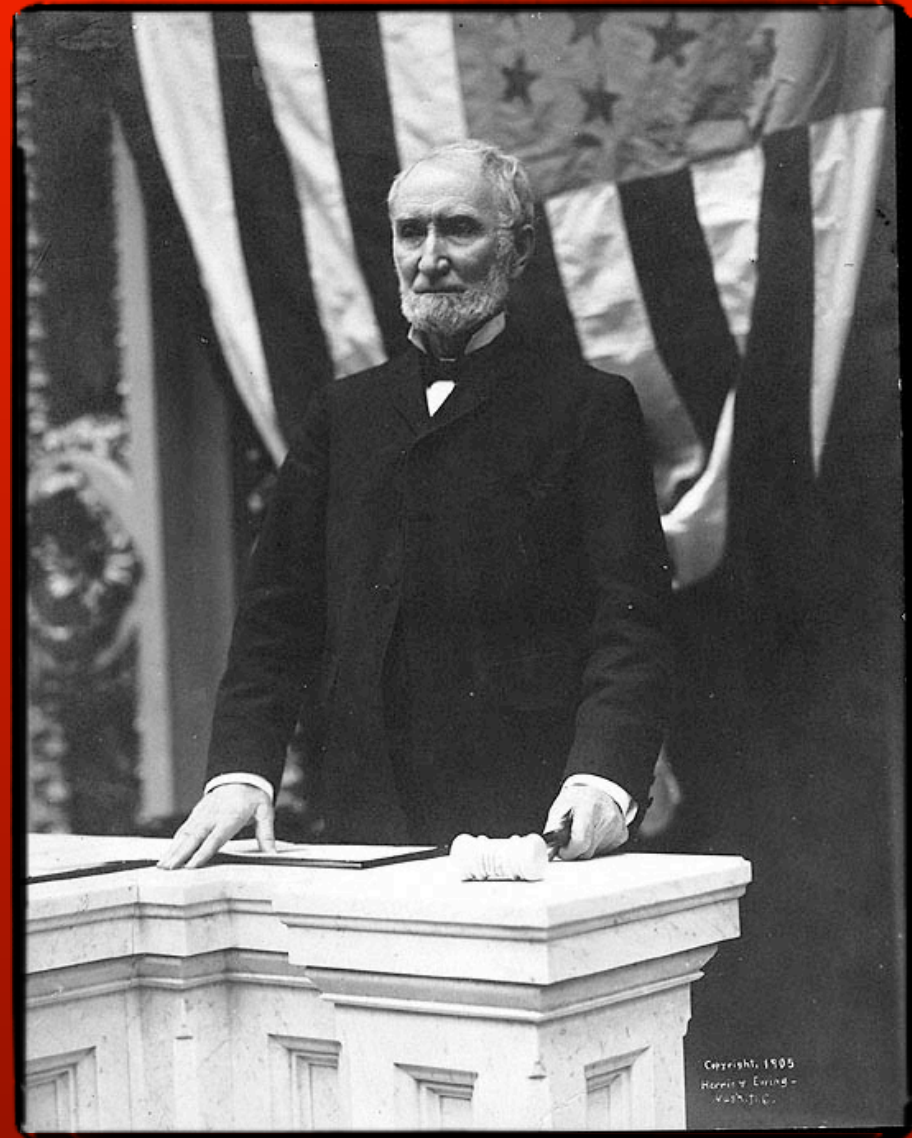
GOP voters grew **frustrated**, displeased with the party
BLAMED TAFT FOR HIGH COST OF LIVING (TARIFFS), REVERSING TR CONSERVATION

SPLIT OVER PARTY DIRECTION

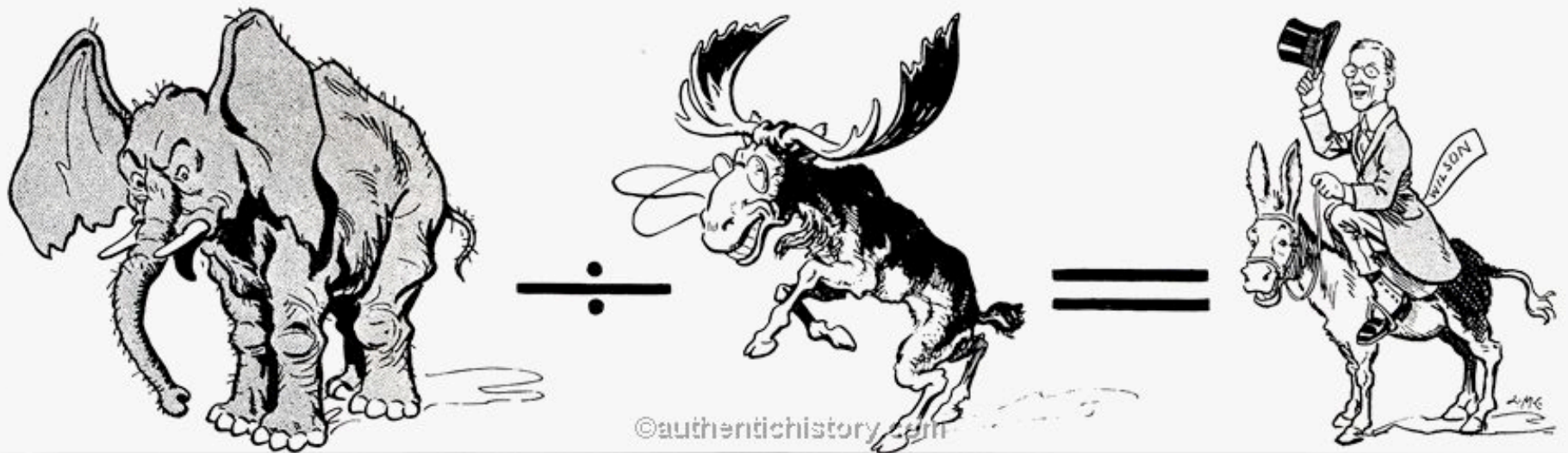
The death knoll of the old GOP surrounded the Speaker of the House Joseph Cannon

CANNON, a staunch conservative, refused put progressive bills on the floor for a vote
DESPITE THIS LACK OF PROFESSIONALISM, TAFT FULLY SUPPORTED CANNON

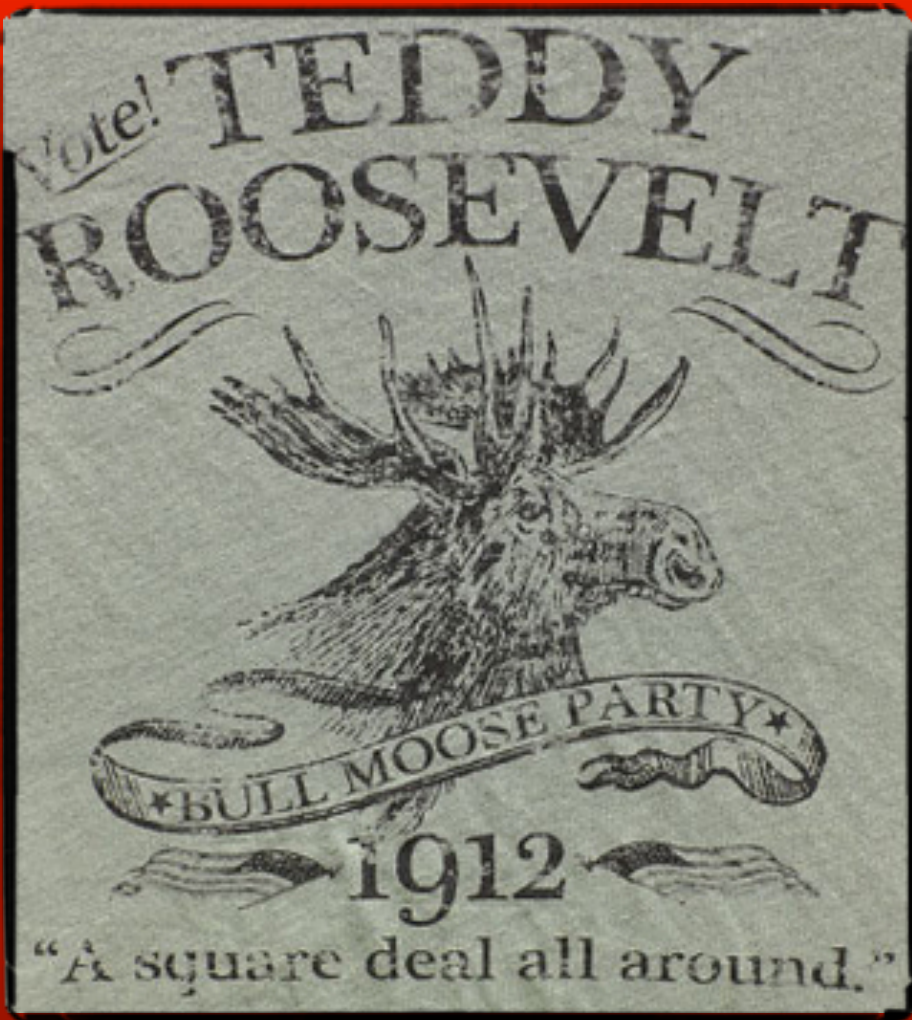
Progressives felted crossed, joined w/ Democrats to strip Cannon of power



THE RESULT IS THE ELECTION OF 1912



THE GOP DESTROYS ITSELF



1912 - **TR** comes out of retirement & **challenges Taft** for POTUS
FIRST, HE'D HAVE TO WIN GOP NOMIN.

The campaign b/w TR and Taft turned **nasty**

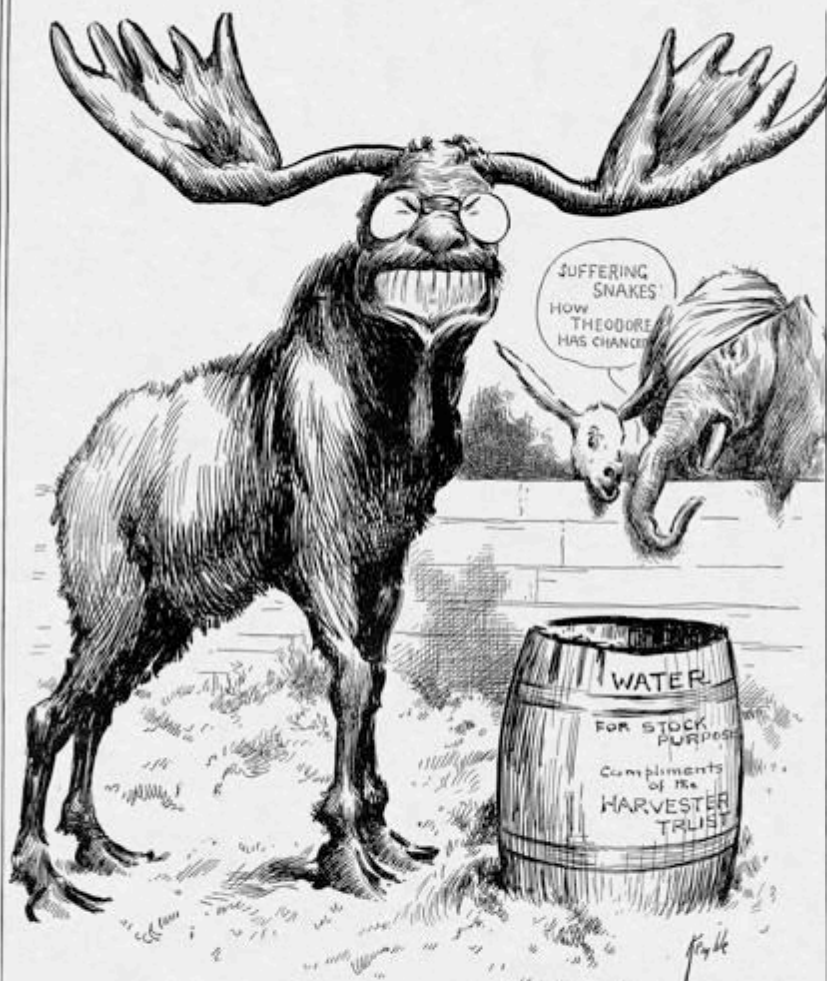
EACH ONE THREW SLURS AT THE OTHER

GOP PRIMARIES SHOWED TR WAS THE

VOTER FAV., BUT TAFT IS THE INCUMBENT

TR's delegates **split from the party**, form the **Progressive Party**, (**Bull Moose Party**)

THEY NOMINATE TR FOR PRESIDENT AS A
3RD PARTY CANDIDATE



THE LATEST ARRIVAL AT THE POLITICAL ZOO

DRAWN BY E. W. KEMBLE



THE ELECTION OF WILSON

In 1912, Democrat **WOODROW WILSON** is **ELECTED PRESIDENT**



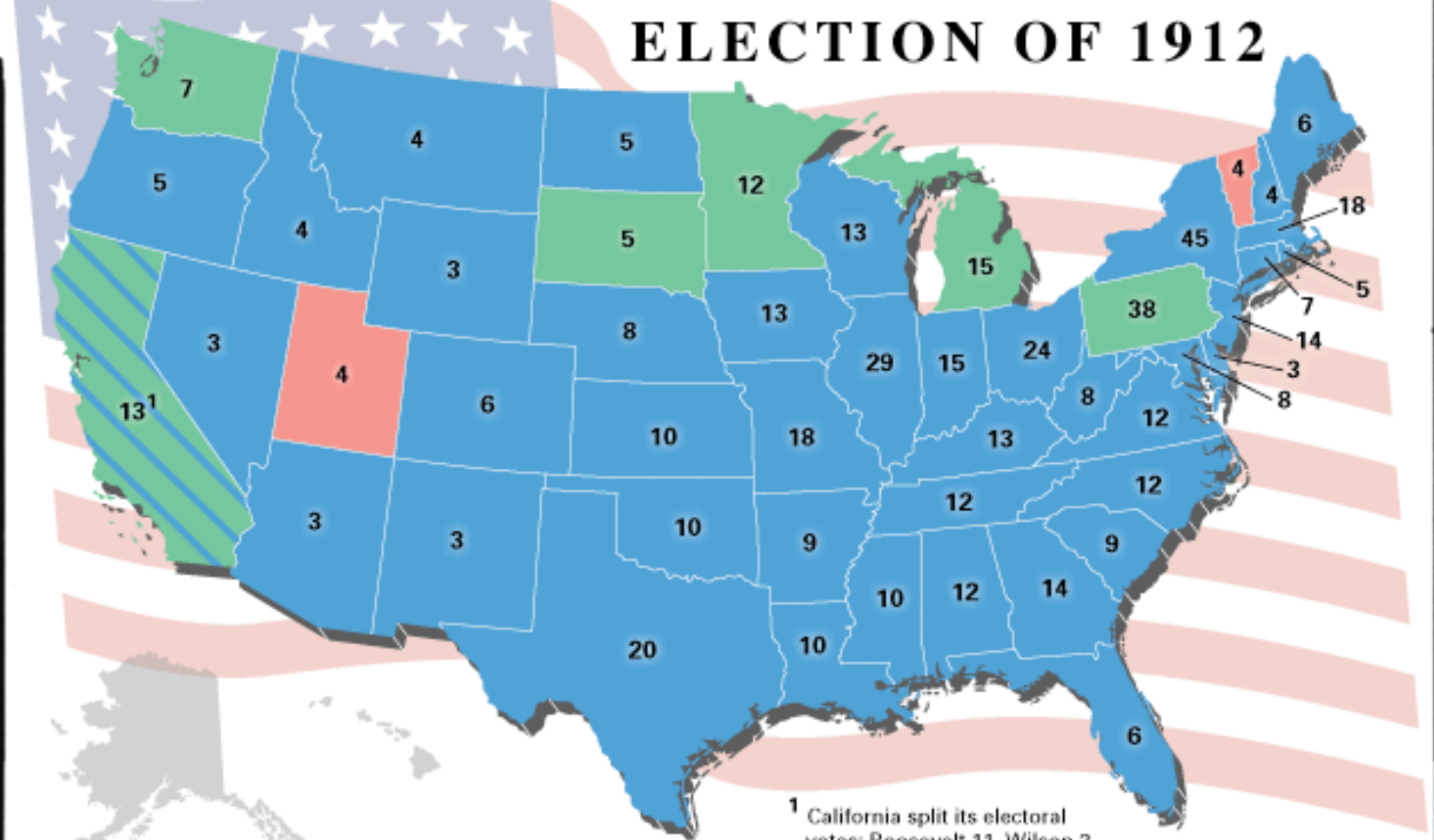
IMPORTANT FACTS ABOUT THE ELECTION OF 1912

THE GOP VOTE **SPLIT** B/W TAFT AND TR, **ALLOWING WILSON TO WIN**

AMERICANS SHOWED A **MANDATE FOR PROGRESSIVISM** BY GIVING **75%** OF TOTAL VOTES TO PROGRESSIVE CANDIDATES

WILSON, A PROGRESSIVE, WON **OVERWHELMINGLY**

ELECTION OF 1912



¹ California split its electoral votes: Roosevelt 11, Wilson 2.

	Wilson (Democratic) 435 electoral votes		Roosevelt (Progressive) 88 electoral votes		Taft (Republican) 8 electoral votes
--	--	--	---	--	--

CLOSURE

WRITE THREE THINGS YOU
LEARNED TODAY ABOUT:

- 1) Differences between Roosevelt and Taft
- 2) The Election of 1912
- 3) Taft's Background and Facts